

# Timber World

## Portable Cabins and Homes Sample Plans, Price List and Inclusions

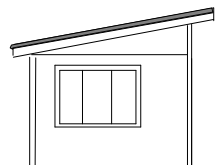
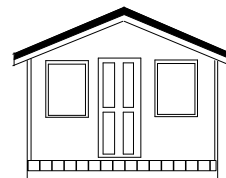
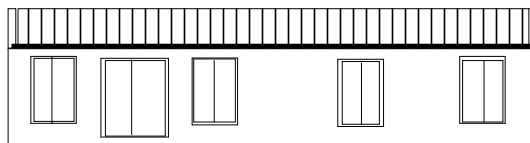
### Welcome to Timber World Portable Cabins and Homes

We specialize in manufacturing transportable cabins and homes made from quality sustainable wood products. The following sample plans are indicators of our range and prices. All projects are quoted for individually so choices of materials, sizes of windows and kitchens, whether you would like built- in wardrobes, or us to paint etc will make a difference to your final price.

Prices page 9

Inclusions page 10

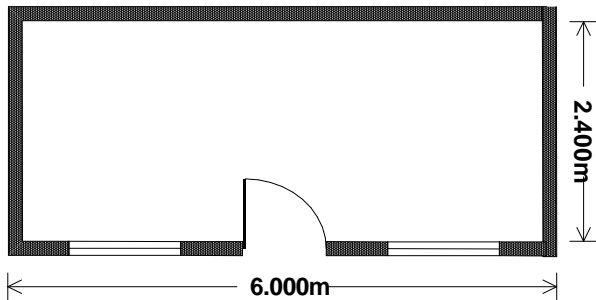
Please contact us for a quotation.



# Timber World

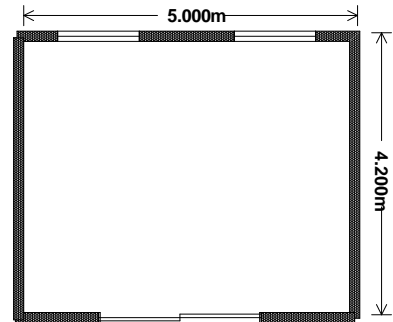
## Portable Cabins—Sample Plans

### OREGON



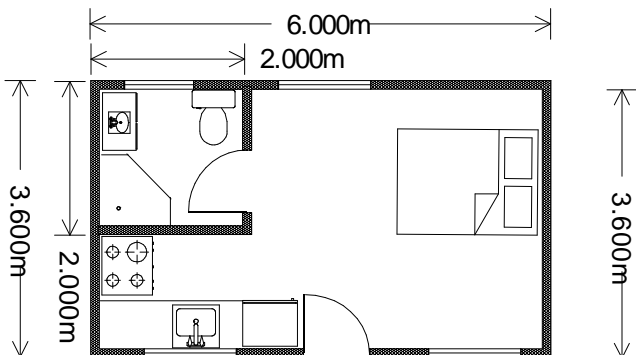
6 x 2.4 Studio

### REDWOOD



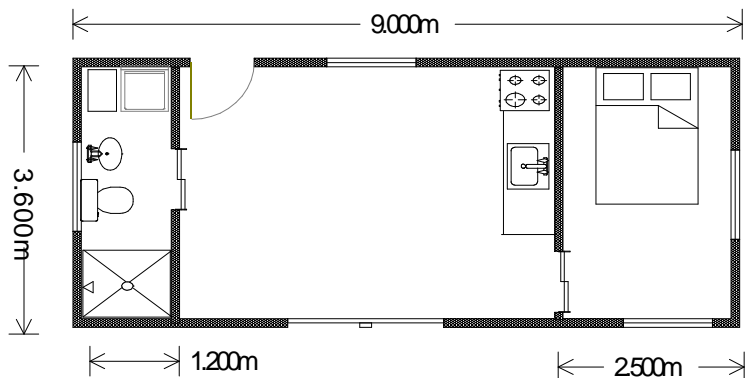
5 x 4.2 Studio

### BALTIC



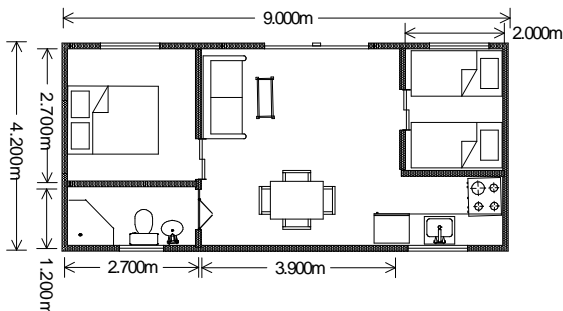
6 x 3.6 One Bedroom

### BLACKWOOD



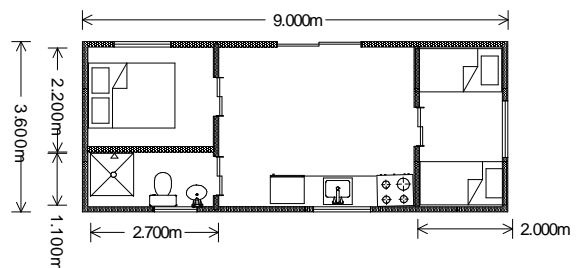
9x 3.6 One Bedroom

### CEDAR



9x 4.2 One Bedroom

### MACRACARPA

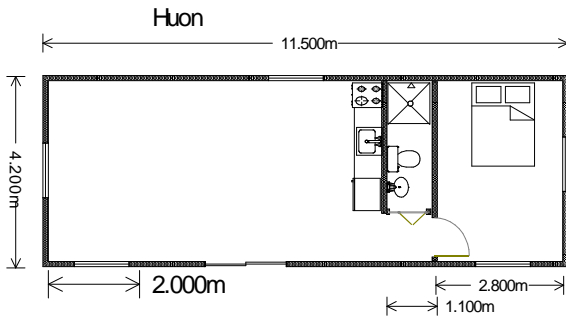


9x 3.6 or 11.5 x 4.2 Two Bedroom

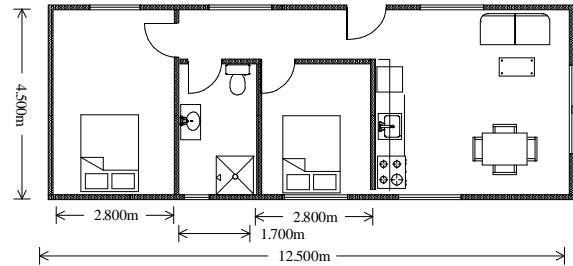
Please note: As Timber World build to order these plans can be amended to meet your requirements.  
 These sample plans are intended as a guide .  
 Please refer page 9 for prices and inclusions  
 Prices effective as of 1.8.11, include GST and are subject to change without notice.

# Timber World

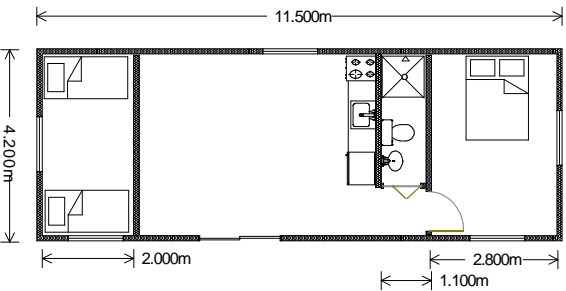
## HUON



## DEVONPORT

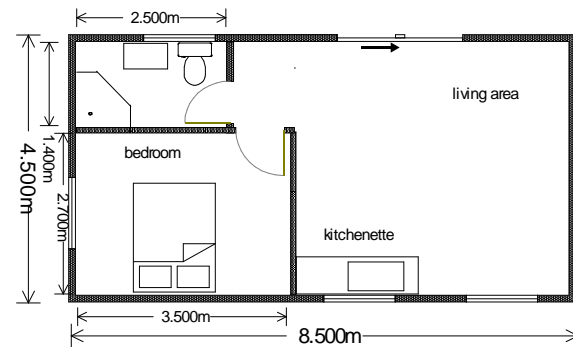


### 12.5 x 4.5 Two Bedroom



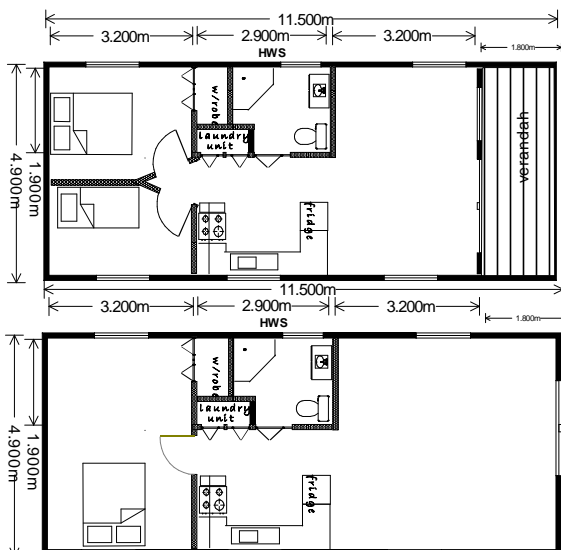
### 9 x 4.2 11.5 x 4.2 One or Two Bedroom

## ROSS



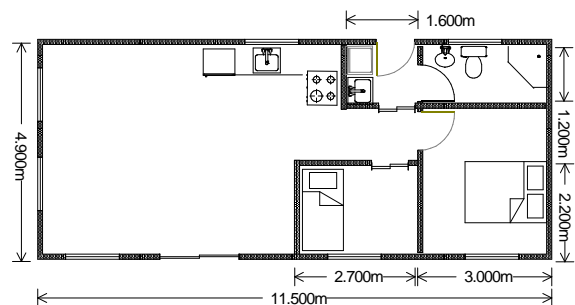
### 8.5 x 4.5 One Bedroom

## LONGFORD



### 11.5 x 4.9 One or Two Bedroom With or without verandah for extra Floor space

## MYRTLE

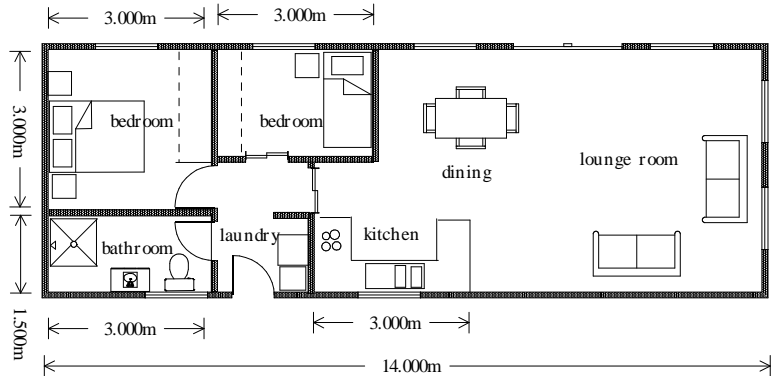


### 11.5 x 4.9 Two Bedroom

# Timber World

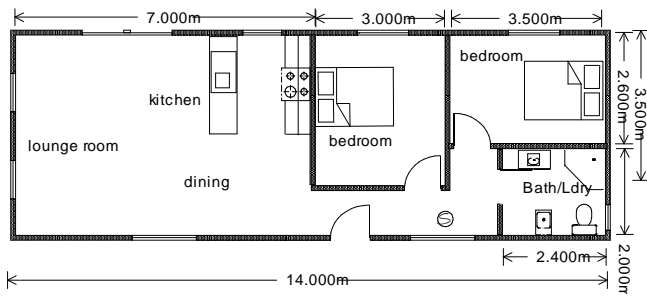
## Legana

14 x 4.9 Two Bedroom



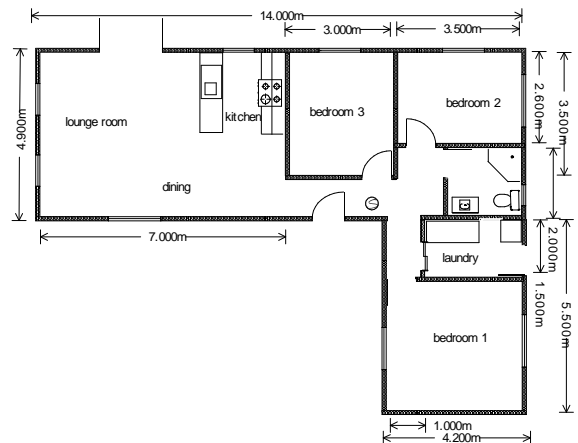
## Westbury

14 x 4.9 Two Bedroom



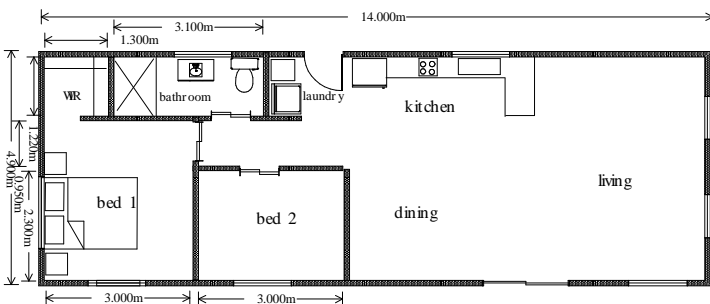
## Westbury Mk 11

3 bedroom and separate laundry  
14mx 4.9 and 5.5 x 4.2



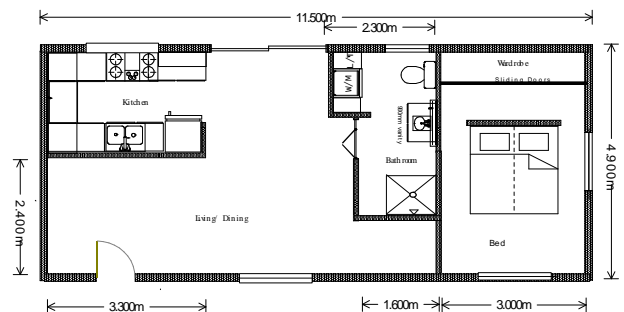
## Beauty Point

14 x 4.9 Two Bedroom



## Strahan

11.5 x 4.9 One Bedroom

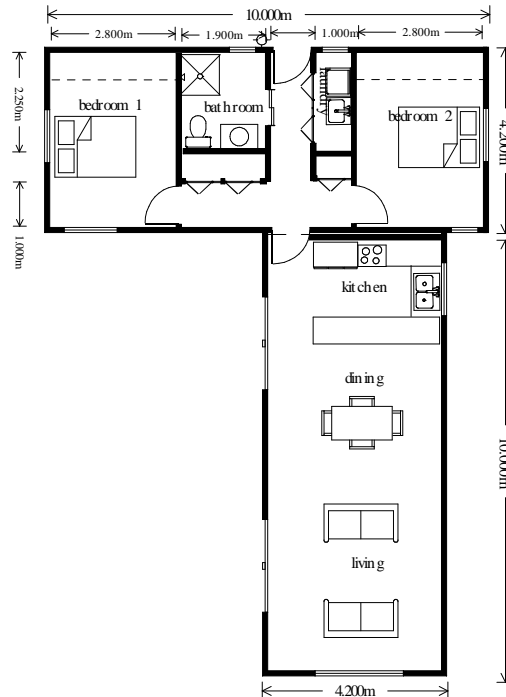


Please note: As Timber World build to order these plans can be amended to meet your requirements.  
These sample plans are intended as a guide only.  
Please refer to page 9 for prices and inclusions

# Timber World

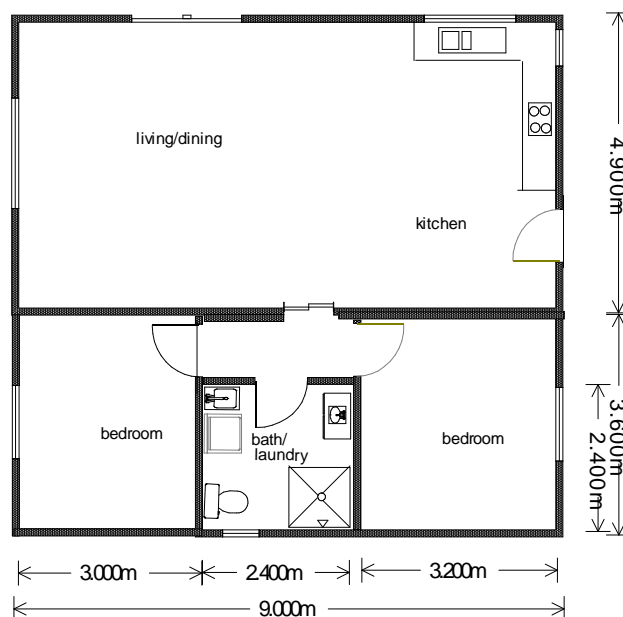
## New Norfolk

2 / 10 x 4.2 2 Bedroom



## PIPERS BROOK

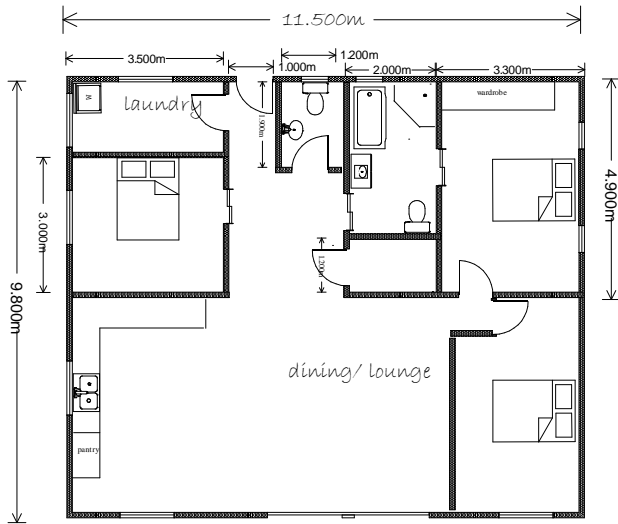
9 x 8.4 2 Bedroom



# Timber World

## Spacious living

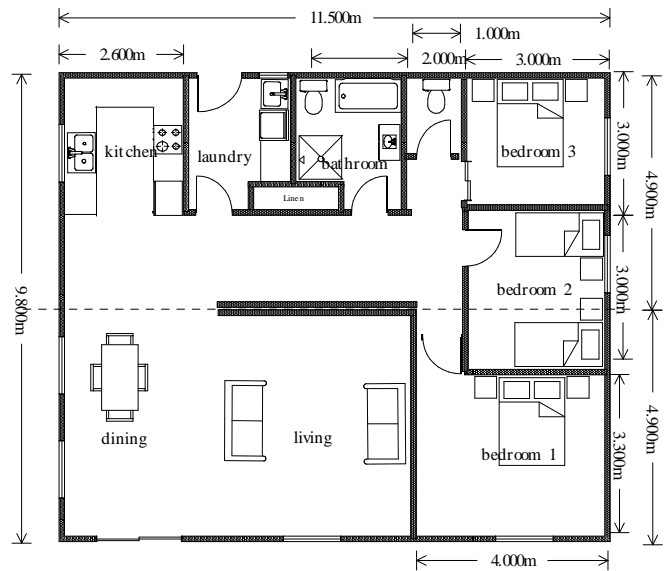
11.5 x 9.8 2-3 Bedroom



## St Helens

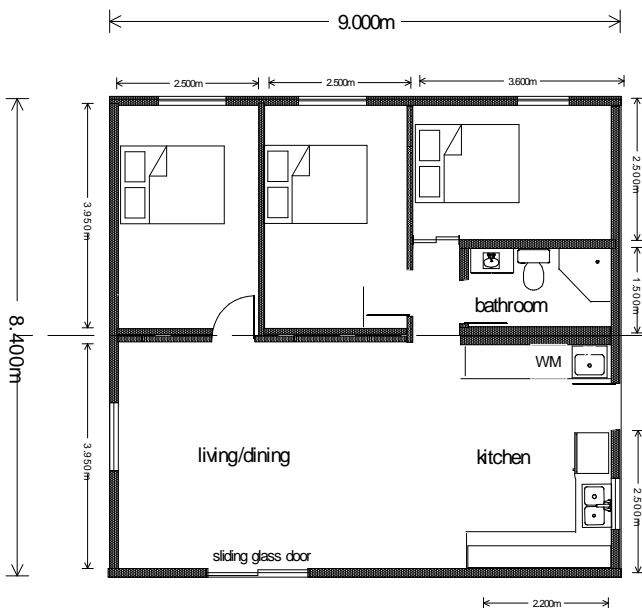
11.5 x 9.8 3 Bedroom

This design can be manufactured in 14m length



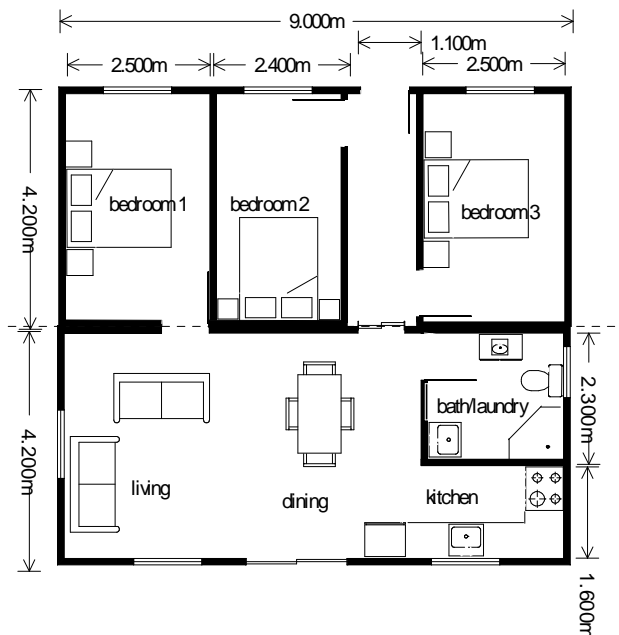
## Economical living

9 x 8.4 2-3 Bedroom



## Beach House

9 x 8.4 3 Bedroom

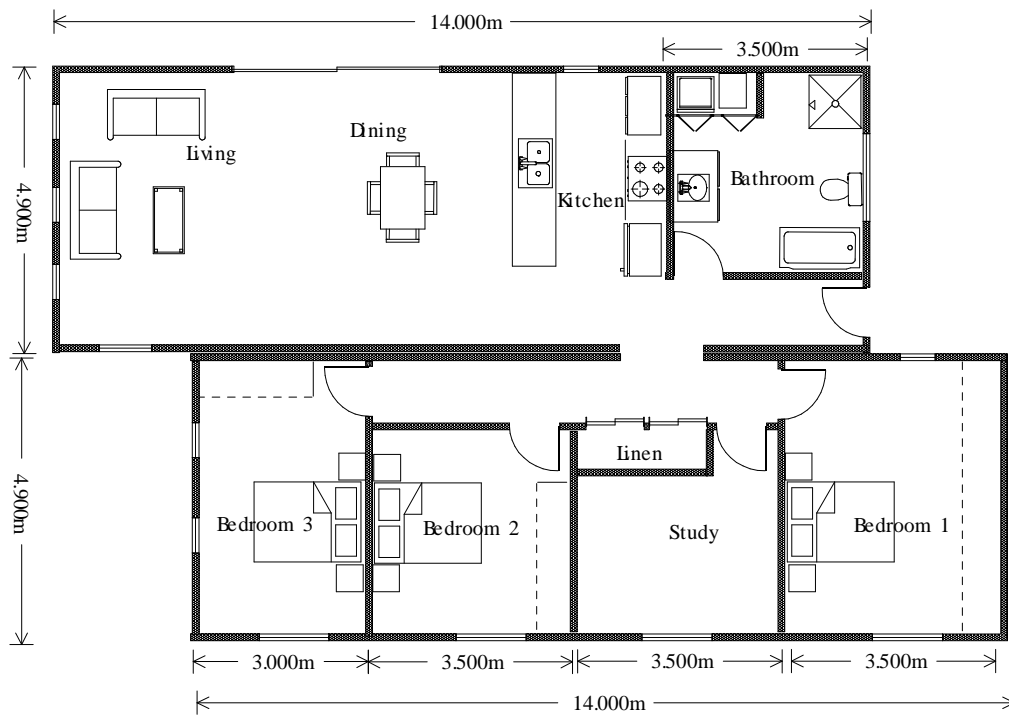


Both of the above sample floor plans can have a study or third bedroom as an option

# Timber World

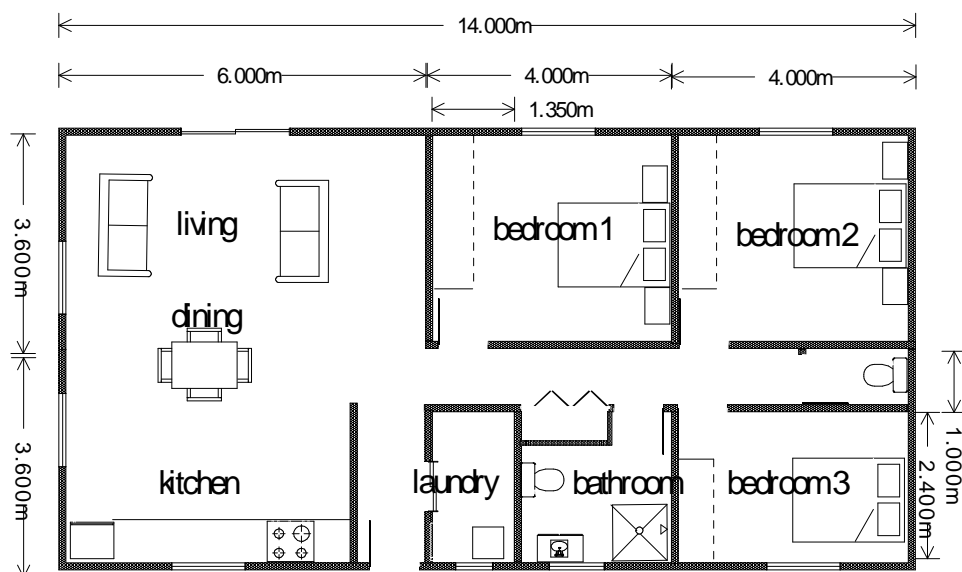
## Port Sorrell

2 / 4.9 x 14 3 or 4 bedroom



## Nubeena

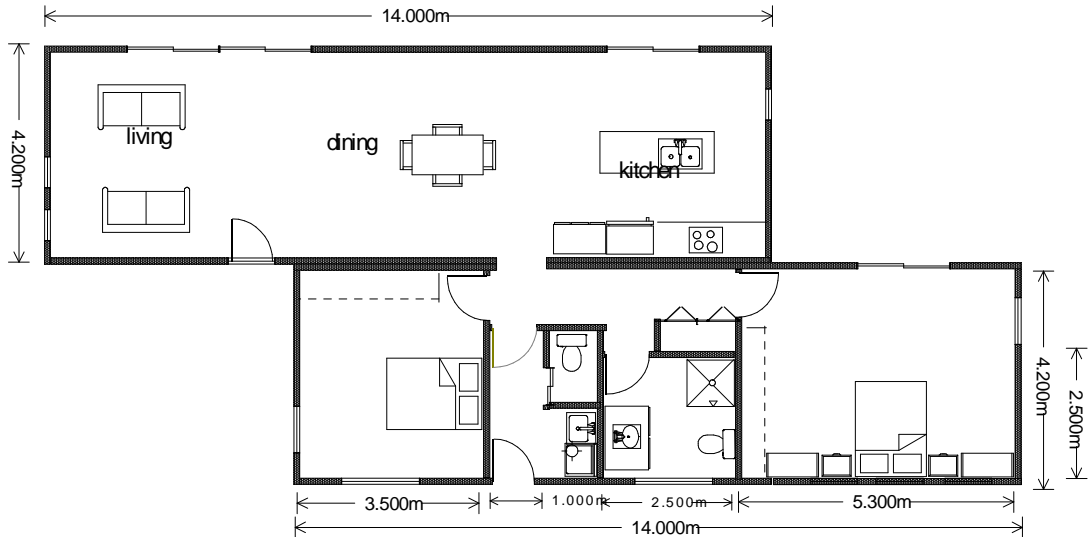
7.2 x 14 3 Bedroom



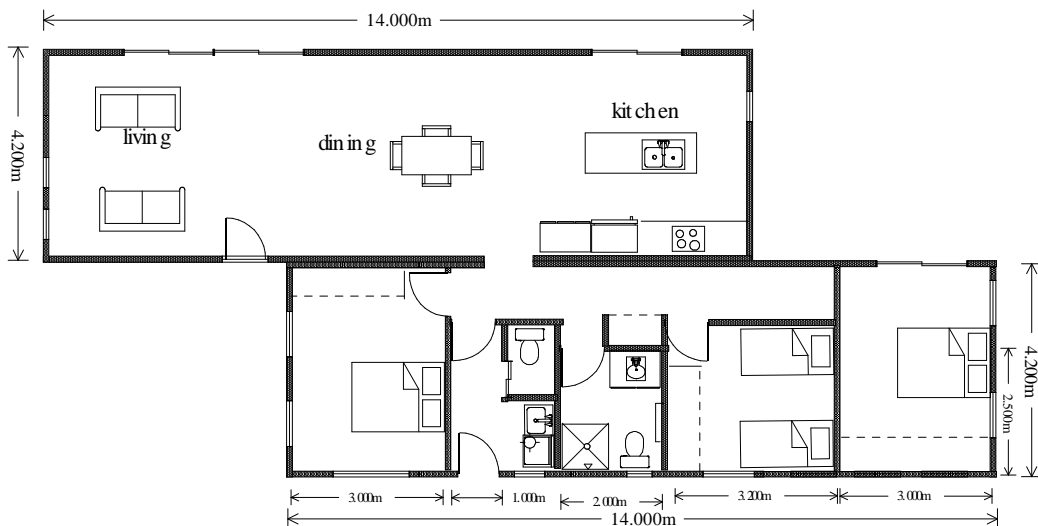
# Timber World

## Bakers Beach

2/ 14 x 4.2 2 Bedroom



2/ 14 x 4.2 3 Bedroom





# Timber World

## Price List

			<b>Complete</b>	<b>Lock Up</b>
<b>Oregon</b>	<b>6 x 2.4</b>	14.4m <sup>2</sup>	<b>\$27,770.00</b>	<b>\$23,600.00</b>
<b>Redwood</b>	<b>5 x 4.2</b>	21m <sup>2</sup>	<b>\$35,830.00</b>	<b>\$30,720.00</b>
<b>Baltic</b>	<b>6 x 3.6</b>	21.6m <sup>2</sup>	<b>\$54,120.00</b>	<b>\$35,751.00</b>
<b>Blackwood</b>	<b>9 x 3.6</b>	32.4m <sup>2</sup>	<b>\$73,659.00</b>	<b>\$48,982.00</b>
<b>Cedar</b>	<b>9 x 4.2</b>	37.8m <sup>2</sup>	<b>\$78,566.00</b>	<b>\$54,410.00</b>
<b>Macracarpa</b>	<b>9 x 3.6</b>	32.4m <sup>2</sup>	<b>\$73,050.00</b>	<b>\$49,498.00</b>
	<b>11.5 x 4.2</b>	48.3m <sup>2</sup>	<b>\$91,780.00</b>	<b>\$65,531.00</b>
<b>Huon</b>	<b>9 x 4.2</b>	37.8m <sup>2</sup>	<b>\$80,330.00</b>	<b>\$54,920.00</b>
	<b>11.5 x 4.2</b>	48.3m <sup>2</sup>	<b>\$92,600.00</b>	<b>\$65,520.00</b>
<b>Devonport</b>	<b>12.5 x 4.5</b>	56.25m <sup>2</sup>	<b>\$106,130.00</b>	<b>\$74,626.00</b>
<b>Ross</b>	<b>8.5 x 4.5</b>	38.25m <sup>2</sup>	<b>\$82,750.00</b>	<b>\$56,250.00</b>
<b>Longford</b>	<b>11.5 x 4.9</b>	56.35m <sup>2</sup>	<b>\$105,280.00</b>	<b>\$73,850.00</b>
<b>Myrtle</b>	<b>11.5 x 4.9</b>	56.35m <sup>2</sup>	<b>\$104,650.00</b>	<b>\$74,290.00</b>
<b>Legana</b>	<b>14 x 4.9</b>	68.6m <sup>2</sup>	<b>\$121,920.00</b>	<b>\$87,160.00</b>
<b>Beauty Point</b>	<b>14 x 4.9</b>	68.6m <sup>2</sup>	<b>\$119,150.00</b>	<b>\$86,330.00</b>
<b>Westbury</b>	<b>14 x 4.9</b>	68.6m <sup>2</sup>	<b>\$120,243.00</b>	<b>\$86,360.00</b>
<b>Westbury Mk 11</b>	<b>14x 4.9and 5.5x4.2</b>	91.7m <sup>2</sup>	<b>\$165,570.00</b>	<b>\$125,739.00</b>
<b>Strahan</b>	<b>11.5 x 4.9</b>	56.35m <sup>2</sup>	<b>\$109,470.00</b>	<b>\$73,094.00</b>
<b>New Norfolk</b>	<b>2/ 10 x 4.2</b>	84m <sup>2</sup>	<b>\$142,760.00</b>	<b>\$102,650.00</b>
<b>Pipers Brook</b>	<b>9 x 8.5</b>	76.5m <sup>2</sup>	<b>\$136,730.00</b>	<b>\$94,000.00</b>
<b>Spacious Living</b>	<b>11.5 x 9.8</b>	112.7m <sup>2</sup>	<b>\$178,210.00</b>	<b>\$130,110.00</b>
<b>St Helens</b>	<b>11.5 x 9.8</b>	112.7m <sup>2</sup>	<b>\$178,790.00</b>	<b>\$130,670.00</b>
<b>Economical Living</b>	<b>9 x 8.4</b>	75.6m <sup>2</sup>	<b>\$132,950.00</b>	<b>\$93,570.00</b>
<b>Beach House</b>	<b>9 x 8.4</b>	75.6m <sup>2</sup>	<b>\$130,290.00</b>	<b>\$93,757.00</b>
<b>Port Sorrell</b>	<b>14 x 9.8</b>	137.2m <sup>2</sup>	<b>\$205,110.00</b>	<b>\$154,220.00</b>
<b>Nubeena</b>	<b>14 x 7.2</b>	100.8m <sup>2</sup>	<b>\$163,350.00</b>	<b>\$119,750.00</b>
<b>Bakers Beach 2 Bed</b>	<b>14 x 8.4</b>	117.6m <sup>2</sup>	<b>\$187,840.00</b>	<b>\$139,331.00</b>
<b>3Bed</b>	<b>14 x 8.4</b>	117.6m <sup>2</sup>	<b>\$189,630.00</b>	<b>\$140,190.00</b>

# Inclusions

All prices are based on the following inclusions as an indicator of sample price. We quote individually for each project with your choices of materials, window sizes, kitchen size and style, wardrobes etc. Note that decks and verandahs can be included to your plans to be built by your onsite tradesperson.

Please contact us for a free no obligation quotation.

- Cedar Weatherboards or Colorbond Cladding
- Colorbond roof
- Oregon rafters and ridge beam.
- Aluminium sliding windows with screens and locks
- Pine or Plaster lining
- 12mm overlay flooring
- Tiles in bathroom and laundry area.
- Insulation- Walls R2.5 Batts and Brane VHP
- Ceiling R5 Batts and Proctor Wrap
- Floor R3.5 Batts
- Laminex Kitchen with sink– white goods not included in price.
- Dual flush toilet suite
- Shower, basin/ vanity and tap ware. Laundry tub and washing machine taps where shown
- Hot water service -160 or 125 litre
- Internal plumbing and wiring
- External four panel wooden door
- Internal four panel doors
- Joining of double units on site, if required.
- Plans and Engineering Certification

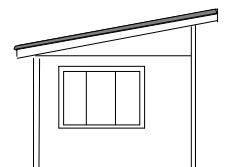
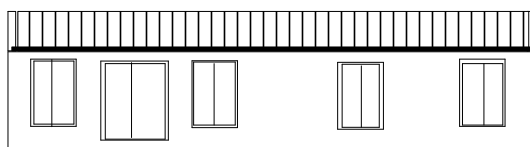
Please note built in wardrobes are not included. We can provide a quote for these.

## Lock up

- Cedar weatherboards or Colorbond Cladding
- Colorbond roof
- Oregon rafters and ridge beam
- Aluminium sliding windows with screens and locks
- Pine lining in ceiling only
- Sheet flooring
- Insulation-
  - Ceiling -R2.5 Batts and Brane VHP
  - Walls—Brane VHP
  - Floor R3.5 Batts
- Basic wiring in ceiling
- External four panel door
- Plans and Engineering Certification

## Options and Extras

Weather boards/ Cladding	Cedar, Colorbond, Oregon, Treated pine, Baltic – round or square edge, Macracarpa
Roofing	Colorbond, Zinalum, Galvanized, Aluminum Tiles
Lining	Pine, Plaster, Tas Oak or minor species timbers
Flooring	Tasmanian Oak- Standard or Feature grade, Pine, Aquabar sheet, or minor species timbers
Windows	Aluminum, Wood - Single or double glazed UPVC- double glazed. Sliding or awning. Choice of size and colour
Painting	We can include internal and external painting in our quotation
Vinyl or Tiles for bathroom and laundry	Colour choice from selected ranges
Kitchen	Price calculated by meter with a choice of door, bench styles and materials. We can include a basic stove or a model of your choice in our quotation
Wardrobes	Price calculated per meter. Choice of door styles available



## Kit Prices and Details

<b>Oregon</b>	<b>6 x 2.4</b>	<b>\$14,875.00</b>
<b>Redwood</b>	<b>5 x 4.2</b>	<b>\$18,495.00</b>
<b>Baltic</b>	<b>6 x 3.6</b>	<b>\$19,000.00</b>
<b>Blackwood</b>	<b>9 x 3.6</b>	<b>\$24,660.00</b>
<b>Cedar</b>	<b>9 x 4.2</b>	<b>\$27,050.00</b>
<b>Macracarpa</b>	<b>9 x 3.6</b>	<b>\$25,020.00</b>
	<b>11.5 x 4.2</b>	<b>\$31,280.00</b>
<b>Huon</b>	<b>9 x 4.2</b>	<b>\$28,440.00</b>
	<b>11.5 x 4.2</b>	<b>\$32,540.00</b>
<b>Devonport</b>	<b>12.5 x 4.5</b>	<b>\$35,791.00</b>
<b>Ross</b>	<b>8.5 x 4.5</b>	<b>\$28,000.00</b>
<b>Longford</b>	<b>11.5 x 4.9</b>	<b>\$34,483.00</b>
<b>Myrtle</b>	<b>11.5 x 4.9</b>	<b>\$34,850.00</b>
<b>Legana</b>	<b>14 x 4.9</b>	<b>\$41,690.00</b>
Beauty Point	14 x 4.9	\$39,320.00
<b>Westbury</b>	<b>14 x 4.9</b>	<b>\$40,290.00</b>
<b>Westbury Mk 11</b>	<b>14x 4.9and 5.5x4.2</b>	<b>\$60,520.00</b>
<b>Strahan</b>	<b>11.5 x 4.9</b>	<b>\$34,288.00</b>
<b>New Norfolk</b>	<b>2/ 10 x 4.2</b>	<b>\$49,063.00</b>
<b>Pipers Brook</b>	<b>9 x 8.5</b>	<b>\$45,040.00</b>
<b>Spacious Living</b>	<b>11.5 x 9.8</b>	<b>\$57,860.00</b>
<b>St Helens</b>	<b>11.5 x 9.8</b>	<b>\$58,350.00</b>
<b>Economical Living</b>	<b>9 x 8.4</b>	<b>\$44,540.00</b>
<b>Beach House</b>	<b>9 x 8.4</b>	<b>\$44,950.00</b>
<b>Port Sorrell</b>	<b>14 x 9.8</b>	<b>\$67,270.00</b>
<b>Nubeena</b>	<b>14 x 7.2</b>	<b>\$54,271.00</b>
<b>Bakers Beach</b>	<b>14 x 8.4</b>	<b>\$62,080.00</b>

Our cabin kits plans are designed to comply with the Building Code of Australia and Australian Standards.

The following has been included in these prices.

- Colorbond roof, gutter, gutter brackets, flashing and ridge cap.
- Framing Pine MGP 10
- Oregon Ridge Beam, rafters and barge boards
- Bearers and Floor joists
- Roof batons
- Aquabar Flooring
- Proctor wrap for roof and Brane VHP for walls
- Hoop Iron brace strap
- Cedar weatherboards.
- Pine lining for ceiling
- Hardware allocation
- Windows– sliding aluminium with screens and locks.
- Sliding glass door– where shown on plans
- External 4 panel timber door, where shown on plans
- Internal flush or four panel door
- Instruction with telephone back up
- Plans with Engineering Certification
- Management of your application until building approval stage.

Not included

- Insulation
- Wall lining
- Architraves, skirting board or trim

We can supply these items to complete your cabin and are available to discuss your options.

Please note, prices will vary with different materials. Individual quotes are available.

Timber World  
 101 Main Rd Meander PO Box 62 Meander 7304  
 Telephone (03)63695288 Fax (03) 63695318  
 Email:queries@timberworld.com.au Web:  
 www.timberworld.com.au